

DI-ACRO #36 FINGER BRAKE INSTRUCTION MANUAL



ACROTECH  **DI-ACRO**

*Manufacturers of **K-Prene®**... the unequalled **Urethane***

Metal Fabrication Equipment

www.acrotech inc.com www.diacro.com 800-345-0583

*... a Division of **ACROTECH***

980 West Lakewood Ave P.O. Box 466 Lake City, MN 55041 Fax: 651-345-3759 Email: di-acro@di-acro.com Email: acrotech@acrotech.com

TABLE OF CONTENTS

A.	SAFETY INFORMATION	PG. 3
B.	ANGLE ADJUSTMENT	PG. 4
C.	NO. 36 FINGER BRAKE PARTS LIST	PG. 5-6-7
D.	MICROMETER BACK GAUGE	PG. 8
E.	OPTIONAL STAND	PG. 9
F.	WARRANTY & LIMITATION OF LIABILITY	PG. 10

A. Safety Instructions



Before brake is set up for operation, mount on work bench or stand* with brake base flush with the front edge of stand or work bench and bolt in place.

***IF BRAKE IS MOUNTED ON ITS OWN STAND, SECURE STAND TO FLOOR**

B. Angle Adjustment

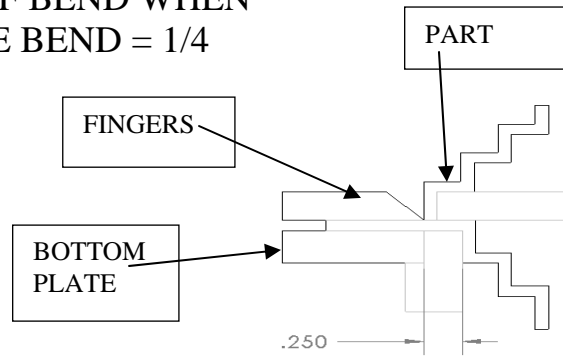
To adjust Brake for bending clearance, raise folding blade 90 degrees, insert material between edges of folding blade and leading edge of fingers (for heavy material, clearance should be twice the thickness, less for lighter gauge or if sharper bend is desired). Adjust finger mount weldment by turning arm adjustment bolts (item 48). To adjust clamping pressure, insert material under fingers and turn arm adjustment bolts until material is held securely when fingers are lowered. To adjust degree of bend, pins (item 44) located on both ends of folding blade for desired degree of bend.

Reverse Bends

Remove the five Hex head cap screws 3/8-16x1 (item 67) the support bar (item 64) and adjust Brake as shown.

NOTE: 16 GAUGE CAPACITY (with support bar in place)

MINIMUM LENGTH OF BEND WHEN FORMING A REVERSE BEND = 1/4

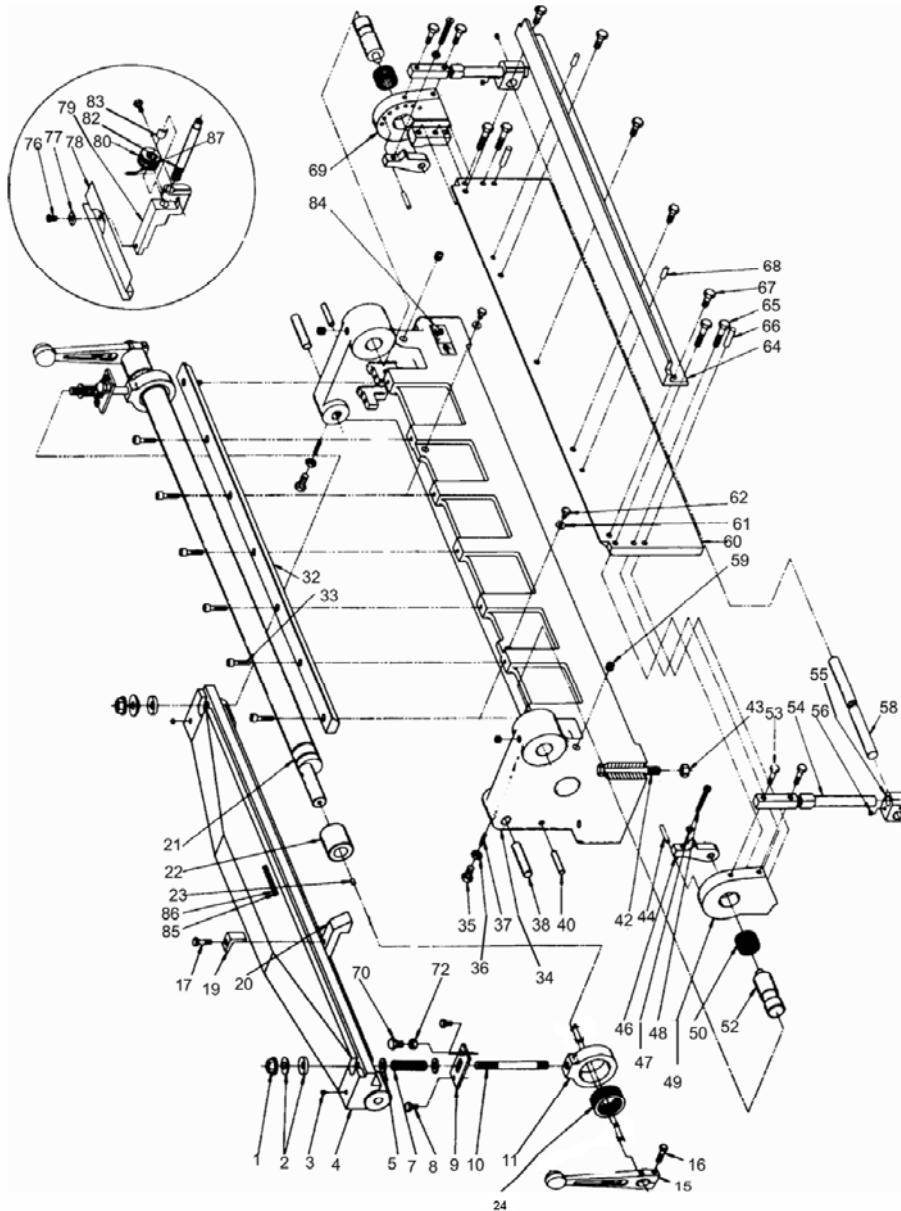


NOTE: DI-Acro Brakes are rated for 1" minimum flange when bending full capacity. Caution should be used if necessary to bend heavier gauge material in short widths.

SPECIFICATIONS – FINGER BRAKES

Model	No. 36	
	in.	mm
Max. Capacity, Mild Steel	16 ga.	1.5
Max. Forming Width	34	914.4
Clearance thru Top Opening	1	25.4
Max. Depth of Box or Pan	3	76.2
Min. Reverse Bend	1/4	6.4
Max. Angle Bend (one operation)	135°	
Max. Back Gauge Adjustment	24	609.6
Shipping Weight	470#	123 kg
Stand, Shipping Weight	140#	63 kg

PARTS BREAKDOWN **NO. 36 FINGER BRAKE**



PARTS LIST

PART NUMBER		DESCRIPTION	QTY
1	30X0102C	NUT-FULL 1/2 -20	2
2	8490500-100	WASHER SET	2
3	23A0104C0308	SCREW-SSS 1/4-20X3/8	2
4	8348111-000	FINGER MOUNT	1
5	8348310-700	THRUST BRG	4
7	8348510-200	SPRING	2
8	22B0104C0102	SCREW- FHMS1/4-20X1/2	4
9	8348140-700	SPRING BRACKET	2
10	8348121-100	STUD	2
11	8348121-200	CONNECTING ARM	2
12	346-1208030	CLAMP HANDLE BLOCK	2
13	8310300-900	NEEDLE BEARING	2
15	8500111-300	CLAMP HANDLE ROD	1
16	21A0516C1304	SCREW-HHCS 5/16-18X1-3/4	1
17	21A0516C1308	SCREW-HHCS 5/16-18X1-3/8	22
19	8347110-203	FINGER CLAMP	22
20	8000122-203	FINGER STD 3/4	2
20	8100122-203	FINGER STD 1	2
20	8000122-204	FINGER STD 1-1/4	2
20	8200122-203	FINGER STD 3	2
20	8347122-204	FINGER STD 6	4
21	8700122-000	BRAKE SHAFT	1
22	346-1103024	BUSHING HOUSING	2
23	8690100-200	DRIVE FITTING	2
24	346-110302-1	BRONZE BUSHING	2
32	8348110-400	BOTTOM PLATE	1
33	0010821-000	SCREW	7
34	8348110-100	BASE	1
35	21A0308C1304	SCREW-HHCS 3/8-16X1-3/4	2
36	31X0102C	NUT-JAM 1/2 -20	2
37	8060510-205	SPRING	2
38	19A0508X3102	PIN 5/8X3-1/2	2
40	1203216	PIN	2

**PARTS LIST
CONTINUED**

ITEM	PART NUMBER	DESCRIPTION	QTY
41	0010804-000	SCREW-SHCS	8
42	21A0102C4104	SCREW-HHCS 1/2-13X4-1/4	4
43	30X0102C	NUT-FULL 1/2 -13	4
44	8203145-000	DOWEL PIN	2
46	8500122-000	FOLDING BAR STOP	2
47	31X0516C	NUT-JAM 5/16-18	2
48	8251470-101	ARM ADJUSTMENT BOLT	2
49	8400122-000	LEFT ARM	1
50	8310300-600	NEEDLE BEARING	2
52	8346120-300	TRUNION	2
53	21A0308C1304	SCREW-HHCS 3/8-1-3/4	4
54	8346120-801	HANDLE ARM	2
55	8348131-000	HANDLE BLOCK	2
56	23A0X10C0308	SCREW-SSS 3/8-16X3/8	4
57	8348122-002	FOLDING BAR REAR	1
58	8348131-200	HANDLE CROSS BAR	1
59	23A0102C0102	SCREW-SSS 1/2 -12X1/2	4
60	8348122-001	FOLDING BAR FRONT	1
61	61X0104	WASHER-FLAT 1/4	2
62	21A0104C0308	SCREW-HHCS 1/4 -20X3/8	2
64	8600122-600	FOLDING BAR SUPPORT	1
65	21A0308C1304	SCREW-HHCS 3/8-16X1-3/4	4
66	19A0308X1102	PIN 3/8X1-1/2	2
67	21A0308C1000	SCREW-HHC 3/8-16X1	5
68	19A0516X1000	PIN 5/16X1	2
69	8346122-000	RIGHT ARM	1
70	21A0308F0304	SCREW-HHCS 3/8-24X3/4	2
72	30X0308F	NUT-FULL3/8-24	2
76	21A0104F0304	SCREW-HHCS 1/4 -20X3/4	2
77	8346144-106	BLOCK	2
78	8348144-100	GAUGE	1
79	8346144-103	QUICK SET BRACKET	2
80	8210143-104	QUICK SET DIAL NUT	2
82	8046144-103	QUIK SET ROD	2
83	8000143-104	QUIK SET DIAL SHOE	2
84	8000140-104	NAMEPLATE	1
86	8030650-310	INSTRUCTION PLATE	1
87	8210510-204	SPRING	2

D. MICROMETER BACK GAUGE

Typically the back gauge is assembled when the finger brake is shipped from the factory. Occasionally it is removed for ease of palletizing. To install and/or zero the gauge follow the instructions below.

1. Install quik set rod (item 82) in holes located in rear of the base casting.
2. Hold quik set dial assemblies (items 79,80,83) on zero and screw rods in until gage (item 78) lines up with folding blade. Quik set rods can be locked in place by tightening screws located behind folding blade.
3. To position micrometer back gauge rapidly, turn quik set dial assemblies to zero. Depress dial and slide complete back gauge assembly to desired position. For fine adjustment turn quik set dial assemblies in regular manner.

**E. OPTIONAL STAND PART NUMBER 838110-900
STAND DIMENSIONS ARE:
48" WIDE, 15" DEEP, 33-1/4" HIGH**

CALL ACROTECH FOR PRICE AND AVAILABILITY



Fasteners needed to attach Finger Brake to stand are the following:
Fasteners to attach stand to floor are not included

PART NUMBER	DESCRIPTION	QTY
21A0102C4050	Screw-HHCS 1/2-12X4-1/2	4
61X0102	Washer-Flat 1/2	4
31X0102	Nut-Hex Jam 1/2-12	4

Warranty & Limitation of Liability

Defective parts of a product manufactured by ACROTECH/DI-ACRO will be replaced or repaired at no charge for twelve (12) months following delivery to the original purchaser. Labor is included for the first 90 days. This warranty becomes void when products have not been used according to instructions furnished by ACROTECH/DI-ACRO, nor does it cover any altered parts or unauthorized repairs. We cannot be responsible for the cost of repairs made or attempted outside of our factory. All warranty claims are made FOB our plant, providing such item(s) is returned freight prepaid to our plant for examination.

This warranty does not apply to parts, components or systems not manufactured by ACROTECH/DI-ACRO. These products are covered instead by the existing warranties, if any, of their manufacturers. Normal service items with a reasonable life expectancy of less than one year are warranted only to the extent of the reasonable life under normal use and service.

Authorization must be obtained from ACROTECH/DI-ACRO before returning parts or equipment to the factory. ACROTECH/DI-ACRO will satisfy this warranty by replacing the product or refunding the purchase price upon receipt and inspection of the product.

ACROTECH/DI-ACRO's liability under this warranty shall not exceed the amount paid for the product.

THIS IS ACROTECH/DI-ACRO'S SOLE WARRANTY IN LIEU OF ALL OTHER WARRANTIES, EXPRESS OR IMPLIED, WHICH ARE HEREBY EXCLUDED, INCLUDING IN PARTICULAR ALL WARRANTIES OF MERCHANTABILITY, FITNESS OR ANY LOSS, DAMAGE OR EXPENSES DIRECTLY OR INDIRECTLY RELATED TO THE USE OF ITS PRODUCT OR FROM ANY OTHER CAUSE OR FOR CONSEQUENTIAL DAMAGES INCLUDING, WITHOUT LIMITATION, LOSS OF TIME AND LOSS OF PRODUCTION.

IT IS EXPRESSLY UNDERSTOOD THAT ACROTECH IS NOT RESPONSIBLE FOR DAMAGE OR INJURY CAUSED TO OTHER PRODUCTS, MACHINERY, PROPERTY OR PERSONS BY REASON OF THE USE OF ITS PRODUCTS.